



In this issue: :

Soups Festival of Proença-a-Velha invites to this small village thousands of visitors
Peony Festival in Toulões: a festival dedicated to a special flower
High Season for the Educational Programs begins
Geopark introduced in a Tourism Seminar at the University of Aveiro
and more!

CRUZIANA

GEOPARK NATURTEJO DA MESETA MERIDIONAL - UNESCO GLOBAL GEOPARK - E-MAGAZINE



Geo-histories of our places and people: Amieira do Tejo

In a case of great geo-strategic eccentricity we go down to meet the Castle of Amieira do Tejo. The monument is placed in the urban area limit, neighbouring one of the most beautiful historical villages from Naturtejo Geopark. We're in lands of Jans, rather wealthy by the look. The Jans were creatures that spun gold; around here there's still the legend of the enchanted Moorish of figs who ranged outside the castle walls, who have been told to distribute figs for those who were hungry, figs that turned into gold. The head of the medieval parish, in mid Tejo river defensive line, initially located in Vila Flor. Nowadays, is a small place guarding the ruins of the ancient Mother Church, as well as an interesting bridge that nowadays is a national monument, beating the Figueiró Stream in its valley of granite boulders. Amieira do Tejo is located in a wide area with 102,44km², all of it opened towards the great River. Here inhabit in the two settlements 241 people that live mainly from the forest resources.

The Castle of Amieira do Tejo is exceptional in many ways. This national monument is considered the Portuguese model of the Gothic castle. It was built in mid XIV century, during the reign of D. Afonso IV, by the knight-monk and Prior from the Order of the Hospital, Álvaro Gonçalves Pereira, when the Order's capital was moved from Leça do Bailio to the Amieira's neighbour Crato. With functions more directed for residence than defence, the Castle of Amieira do Tejo very few times was sieged and destroyed. This way, resisted to the tests of time as one of the Portuguese well preserved castles, sharing walls with the chapel of S. João Baptista. Spread around the space of the 4 towers and the great watch tower, as well as the chapel, we'll find a heritage of mural art, rare in the Portuguese castles, even today not well known. At the end, the same rock that constitutes the buildings is singular. The plutonite of Amieira do Tejo is cut by the intrusive massif of Nisa, dated from 320 million years. It presents an internal lithofacies, nuclear, with thin and darker granularity, resulting from the depths of the earth's crust. The granite of Amieira do Tejo is, therefore, a thin and dark rock that grants to the monument a Middle Age drama that stands out from the white architecture, typical from Alentejo that dominates the village.

Here we'll find other buildings with Gothic features contemporary of the castle. But we have to walk along the narrow streets and it's worth it, slowly, picking architectural traces here, small palimpsest compositions of great value there. Dominating the village, can be found in a small hill the interesting Calvary Church. The boat of Amieira, which since several centuries ago crosses the Tejo river, nowadays still does it although sporadically, connecting the small village to the Beira Baixa train. Ranging the Trails of Jans is going down to the bucolic Tejo valley and crossing the tow wall, still well-preserved in this place, which eased the transposition of the cascades by the boats that went up the river.

Here we can touch the granite of Amieira do Tejo, as well as the more different and coarse lithofacies of S. José das Matas, and follow its intrusive contacts with the schists and grauvaques from the Group of Beiras, wandering the magma crystalizing in the depths of the Earth's crust and the amazing released heat that even "baked" the metasedimentary rocks. Well, in the Summer we may have an even more real feeling of this heat released many million years ago, while ranging the rocky Tejo valley! If we hear the noise of the tumultuous waters during the winter and the train's whistle when passing by the valley, all that remains is silence. Staying in the Prior House is ensuring that we awake for the long past experiences. Here, there's the lack of extension of the Historical Villages of Portugal animation program. There are already local initiatives that aim to wake Amieira do Tejo from its long lethargy. However, Amieira do Tejo has conditions to make a journey to the medieval world extending 365 days a year. It lacks the proximity that Óbidos has to the major urban areas. But if we want a medieval paradise for us to get lost, that place is in the Geopark and it's called Amieira do Tejo.

References

- NETO DE CARVALHO, C. & RODRIGUES, J. (2012) – Património Geológico e Geomineiro de Nisa: caracterização do território e sua integração no Geopark Naturtejo. *Açafa Online*, 5: 91-168.
- RIBEIRO, M.L., PALÁCIOS, T. & MUNHÁ, J. (1993) – O Complexo Eruptivo da Amieira do Tejo e sua diversidade petrogeoquímica. *Comunicações do Instituto Geológico e Mineiro*, 79: 3-13.
- ROMÃO, J. (2006) - Carta Geológica de Portugal à escala 1/50000, Notícia Explicativa da Folha 28-A, Mação. *Laboratório Nacional de Energia e Geologia*: 77p.
- SOLÁ, A.R. (2007) – Relações petrogeoquímicas dos Maciços Graníticos do NE Alentejano. Tese de Doutoramento, Universidade de Coimbra, 405p.
- SOLÁ, A.R., NEIVA, A.M.R. & RIBEIRO, M.L. (2010) – Geocronologia, petrologia e geoquímica dos granitoides do NE Alentejano (transição ZCI/ZOM): significado geodinâmico. *Ciências Geológicas*, vol. I: 281-290.
- SOLÁ, A.R., RIBEIRO, M.L., MOREIRA, M.E. & MOREIRA, M. (1998) – Complexo Eruptivo de Nisa – cartografia geoquímica e mecanismo de implantação. *Comunicações do Instituto Geológico e Mineiro*, 84(1): B39-42.
- TERENO, J., VINTEM, C.S. & CRUZ, C.A. (1971) – Contribuição para o conhecimento geológico da região da Amieira (Nisa). *Boletim do Museu e Laboratório de Mineralogia e Geologia da Faculdade de Ciências de Lisboa*, 12(1): 47-54.

Frontpage: (Projecto Objectiva: Geopark)

The Editor
Carlos Neto de Carvalho
Scientific Coordinator
Geologist



Monthly Activities



2 to 3 April – Thousands in the Soups Festival of Proença-a-Velha. The Soups Festival of Proença-a-Velha registered thousands of visitors in this peaceful village. In this Festival were introduced 119 traditional soups, prepared by the people from the community, restaurants from the region and several entities, which went for contest. There was no lack of entertainment with the Meeting of Accordion and Concertina Players.

During the Sunday afternoon, the television show “Somos Portugal” followed live the overwhelming soup contest, always very attended, and yet disclosed other gastronomy details, local products, handcraft and heritage from the Idanha-a-Nova Municipality.

“It was once again a success the promotion of what our region has best, in this case the soups which are a great treasure in our Mediterranean diet. With the events that we’ve been hosting in the municipality, we’ve been promoting our products successfully, creating wealth and jobs”, stresses Armindo Jacinto, Mayor of the Idanha-a-Nova Municipality and president of the Geopark.

Once more, it was up to the visitors the task of electing the best recipes in contest. The great winners were the “Stone Soup” from João Martinho (Rosmaninhal) in the private category, the Bean Soup from the Parish of Rosmaninhal in the institutions category and the Mushrooms Soup from the Tasquinha do Manteigas (Idanha-a-Nova), for the fifth consecutive year, in the restoration category. In the last one, there was a voting by judges, which was won by the Cold Raspberry Soup with river pennyroyals and orange blossom, from the Restaurant “Helana” (Idanha-a-Nova).

3 April – Road cycling in Idanha-a-Nova. This road cycling event brought to the region many sport lovers, more or less experienced. The contest, with lengths of 144km or 75 km, included sections with several technical difficulties (climbs, paved trails) in the Spring landscapes of Idanha.



4, 6, 7, 12, 15, 18 and 26 April - Field Trip from the Project Rivers: Monitoring the Ponsul River. 126 students from the School of Idanha-a-Nova (10thA, 5thC, 8thA, 8thB, 5thB and 5thA) and 17 students from the Vocational Course of EPRIN visited the sections of the Ponsul River adopted by its classes, in order to proceed with the monitoring of the river quality, through the verification of the number of animal and vegetable species (biodiversity), tests to the degree of turbidity and water pH, determining the stream speed and water flow, and checking the riverbanks during the section. The monitors for these activities were Manuela Catana, Arlindo Cardosa and Hugo Oliveira.



5 to 6 April - Performing the Workshop "Earth and Life Games". To this activity attended 63 students from the 5th school year of the School José Silvestre Ribeiro, Idanha-a-Nova, where they could acknowledge the fossilization process, as well as some of the most important fossils found in the Naturtejo Geopark territory. In this activity the students could yet watch the small animated film about life in the Palaeozoic area and afterwards they built their own trilobite mould with modelling paste. The monitors for this activity were Manuela Catana, Mariana Vilas Boas and Hugo Oliveira.



6 to 7 April – Students from Algarve learned in two Naturtejo Geopark geomonuments. During two days, 51 students from the 11th and 12th school year from the School of Silves, in the scope of Biology and Geology and Geology, respectively, could learn in the Ichnological Park of Penha Garcia and in the Natural Monument of Portas de Ródão. The students came followed by 3 teachers. The monitors for this field trip were Manuela Catana and Hugo Oliveira.

8 April – Presentation of the territory capabilities to students from Tourism courses. The AHRESP – Portugal Association for Hotels, Restauration and Similar, with the support of Naturtejo Geopark, gathered 200 Tourism students, from several regional schools, in Penamacor for the action “Portugal among Generations”. The speaker’s panel was formed by the Mayor of the Penamacor Municipality, António Luís, by Helena Pinto, Director of the School Ribeiro Sanches, Pedro Machado, Chairman of the Center of Portugal Tourism, Olga Cavaleiro, Chairman of the Portuguese Brotherhoods Confederation, and Paulo Mendonça, vice president of AHRESP.



8 to 9 April – A journey through the cycle of rocks in the Center of Portugal. This activity was the premiere of a new field trip in Naturtejo Geopark that results from a partnership with Grutas da Moeda Caves, in Fátima. Naturtejo Geopark and the Grutas da Moeda Caves take part in the Route of Mines and Geological and Mining Sites of Interest, a platform intended for the promotion of Portuguese geo destinations. The participants were 36 students and 2 teachers from the Primary and Secondary Schools Ferreira de Castro (Oliveira de Azeméis). The field trip took place in the scope of Biology and Geology class from the 11th grade. On the first day, the students met the Ichnological Park of Penha Garcia and the Inselberg of Monsanto and on the second day they visited the Grutas da Moeda Caves and its scientific-environmental Interpretation Centre. During the first day the activities were energized by Hugo Oliveira and Manuela Catana and the second day by monitors from Grutas das Moeda.



14 April – Educational Program in the Portas de Ródão Natural Monument and the Fossil Trunks of Vila Velha de Ródão. This activity was participated by 16 students from the 6th grade from the School José Silvestre Ribeiro, Idanha-a-Nova, followed by 1 teacher. During the field trip the students could locate the Portas de Ródão Natural Monument in the Naturtejo Geopark territory, identifying its own lithology as well as the surrounding lithologies. The students made a boat trip in the Tejo river, where they learned the importance of the zoo-archaeological site in Foz do Enxarrique, analysing the formation processes of the Vila Velha de Ródão syncline and observing some of the birdlife present in the region such as the griffon vultures and the black stork. On the second half of the activity the students could watch and analyse the fossil trunks located in the garden of the Tejo Arts and Culture House (CACTEJO) and visit the Rock Art Interpretation Centre (CIART). The monitor for this field trip was Hugo Oliveira.

15 April – The fossils of Penha Garcia and the boulders of Monsanto. In this activity attended 29 students, from the 11th and 12th school years from the School Josefa de Óbidos from Lisbon. The field trip took place in the scope of Biology and Geology and Geology classes, from the 11th and 12th school years, respectively. During the field trip the students could learn and review some concepts in the Ichnological Park of Penha Garcia. On the second half the students could meet the granite Inselberg of Monsanto, where they could also interpret the phenomena of Idanha-a-Velha and Monsanto. The company Geo.Life guided this tour. The monitor was Hugo Oliveira.



17 April – University students from Oporto in the boulders of Monsanto. A group of 52 students from the University of Oporto came to meet the historical villages of Idanha-a-Velha and Monsanto. The company Geo.Life guided this tour.

17 April – Running competition in the “Slope of Senhora da Graça”. The Slope of Senhora da Graça, in Idanha-a-Nova, gathered around 200 athletes, coming from several spots of the country to compete in this running competition that unites the square of Nossa Senhora do Almurtão sanctuary to the Municipal Square. This run, hosted by the Municipality of Idanha-a-Nova, with the technical support of the Athletics Association of Castelo Branco and Naturtejo Geopark, included the admirable running up the slope of the Ponsul fault, a tectonic step that portrays all the landscape of Idanha.

18 and 19 April – European University returns to the Geopark. ETDH – Tourism, Sports and Hospitality School, from the European University, developed a national wide project, with the participation of 390 students, taking them to 40 guesthouses spread throughout the country, passing by the Naturtejo Geopark and staying in the Youth Hostels of Castelo Branco and Idanha-a-Nova. These projects developed in closed partnership with Movijovem aim to reanimate the concept of youth hostel, as a preferential accommodation among the younger generations. This project main goal is to make the youngsters apply, in a company real problem, specialized knowledge acquired in classroom environment, simultaneously developing their creative and analytic skills. Besides, the initiative aims to approximate the students to the business environment, opening new horizons and perspectives. The students left the University on the 18th in groups going towards Algarve, Alentejo, Center and North to understand these regions contexts and different guesthouses. They came back to the University on the 19th enriched and ready to develop their relaunching ideas for the guesthouses, supported by 22 professors. On 9 June the projects will be introduced to a panel of tourism and hotel specialists.



18 and 20 April – Anim'A Rocha “Visit to Naturtejo Geopark: the Portas de Ródão Natural Monument”. This educational program took place in two stages. The first was a pre-field class in school, in the class of Natural Sciences, in the School of Vila Velha de Ródão. Here was made an introduction of Naturtejo Geopark, its Geological Heritage in general, with particular emphasis in the existent geosites in the Municipality of Vila Velha de Ródão, highlighting the Portas de Ródão Natural Monument. The students observed the geological map of Naturtejo Geopark and identified some hand specimens of its most common rocks. The second stage was a Field Trip that took place in the Viewpoint of the King Wamba Castle, in Vila Velha de Ródão. It was made the landscape interpretation from the viewpoint and told the geological history of the Portas de Ródão Natural Monument. The history of Human occupation and the landscape interpretation were carried out by the teachers of History and Geography.

This interdisciplinary educational program took place in the scope of Natural Sciences, Geography and History classes. Attended in these activities 18 students from the 7th grade followed by their teachers. The monitors for this activity were Manuela Catana and Hugo Oliveira.



19 April – In the Fossils Trail searching for Trilobites traces

19 April – In the Fossils Trail searching for Trilobites traces. Attended to this field trip, in the scope of Natural Sciences, History and Moral and Religious Education classes from the School of Sertã, 99 students and 9 teachers, belonging to the 7th grade. The monitors were Hugo Oliveira and Manuela Catana.



20 April – Naturtejo Geopark in a Seminar at the University of Aveiro. The Department of Economy, Management, Industrial Engineering and Tourism from the University of Aveiro hosted the Seminar "Reinventing Tourism in Portugal: New Challenges, New Approaches", mainly intended for students from the Tourism Degree and the Master Degree in Tourism Planning and Management. This initiative main objective headed by the professors Celeste Eusébio and Maria João Carneiro was to bring to the University some companies in the tourism area that distinguish themselves by the approaches used when facing new challenges in touristic activity, having Naturtejo Geopark been one of those case studies, introduced by Joana Rodrigues.

21 and 22 April – Celebration of the World Earth Day and Geological Heritage by the School Nuno Álvares. In these two days, 151 students from the 7th school year from the School Nuno Álvares, from Castelo Branco, followed by 15 teachers learned one of the 17 geomonuments that form the geological heritage of Naturtejo Geopark, the Ichnological Park of Penha Garcia.

During the trip the students could locate the Ichnological Park of Penha Garcia in the Naturtejo Geopark territory, identifying its own lithology as well as the surrounding lithologies. During the Fossils Trail, among other actions, the students could analyse the formation processes of the syncline of Penha Garcia, proceed to the observation of several Cruziana samples, meet the watermills of the Ponsul river and watch some of the birdlife existing in the region. The monitors were Manuela Catana and Hugo Oliveira.



23 and 24 April – Peony Festival recalls biodiversity at risk. A nice, Spring weekend welcomed the 1st Peony Festival, which attracted many visitors to Toulões, in the Municipality of Idanha-a-Nova, to appreciate the precious wild flower (*Paeonia broteroi*) that blooms in the region. In an event supported in the landscape's natural and cultural richness, days of entertainment were enjoyed, with hikes through the fields, street parades, street theatre, fair with regional products and a much diversified musical line-up.

The 1st Peony Festival allowed “to energize the local economy and to promote the traditional products of this region, in this village that already deserved an event of this nature” stressed Armindo Jacinto, Mayor of the Idanha-a-Nova Municipality and Chairman of Naturtejo Geopark.

The president of the village of Toulões, José Torres, congratulated himself with the “added value that represents to this land the opening event concerning the peony, with a great affluence of visitors that positively surprised”.

One of the highlights happened in the Sunday morning: more than 160 people attended to a pleasant walk through the flowered fields of Toulões, where was no lack of specimens of this charming peony to contemplate. In that same morning, under two wheels, dozens of old bikes from Idanha travelled through the Municipality of Idanha-a-Nova in a bike ride that ended with a lunch at the Festival square.

The afternoon proceeded with hundreds of people taking part in a very entertained zumba dance class and said goodbye, in great style, under the sound of music.

It is worth to mention that Naturtejo hosted a themed touristic program that passed through the most interesting points in the region, ending with the participation in the fair. The guides belong to the company Geo.Life.

24 April - Levadas Trail in the Gardunha Mountain. The Levadas Trail, starting in Lourical do Campo, began with the climb of the Gardunha Mountain, passing through the Medium Height Holiday Camp park, where was addressed the History of the Jesuit College of S. Fiel, once house of Science where the Portuguese Nobel winner António Egas Moniz passed by and where was founded the scientific magazine Brotéria – Magazine of Natural Sciences, in 1902. After passing by Casal da Serra, the walkers came down the Ocreza river, through the water channels of the mills, extending during the course of the river unto the village of Torre ending the trail, again, at Lourical do Campo.

30 April to 2 May - Geographica in a bike journey through the Geopark. The Spanish operator Geographica brought 14 persons who made MTB activities and stayed in the Hotel Fonte Santa, in a program hosted by Naturtejo. The activities were made freely. In the same period, The Thermal Spas of Monfortinho were also visited by the Spanish operator Tierra de Fuego, which brought to the place 26 participants in its touristic program.

IMPACT OF GEOPARK IN MEDIA



Newspapers & www

- 6 April (Povo da Beira) – Proença-a-Velha, the capital of Soup
- 13 April (Povo da Beira) – 1st Peony Festival - Biodiversity inspires hike in Toulões
- 13 April (Povo da Beira) – Summer Campaign of the Archaeological Field is already being prepared
- 13 April (Povo da Beira) – 10th Festival of the Spring entertains the School
- 14 April (Dica da Semana-Lidl) – Naturtejo Geopark – Responsible Tourism
- 14 April (Reconquista) – Archaeological Field during the month of August – New campaign in preparation
- 14 April (Reconquista) – International Congress discuss palaeontology
- 20 April (Povo da Beira) – Toulões invites for the 1st Peony Festival
- 20 April (Povo da Beira) – Management School hosts International Ichnology Congress
- 20 April (Gazeta do Interior) – Toulões hosts the 1st Peony Festival
- 21 April (Reconquista) – Peony Festival entertains the village of Toulões
- 28 April (Reconquista) – Peony gives life to Toulões

SCIENTIFIC CONTRIBUTIONS FOR THE GEO PARK AND THE GEOSCIENCES



- BAUCON, A. & NETO DE CARVALHO, C. – Stars of the aftermath: Asteriacites beds from the Lower Triassic of the Carnic Alps (Werfen Formation, Sauris di Sopra), Italy. *Palaios*, 31(4), 161-176.

PROMOTION FOR THE GENERAL PUBLIC



INSERIDO NO FESTIVAL DA PAISAGEM SEMANA EUROPEIA DOS GEOPARQUES

GEOROTA DO ORVALHO

28 maio

JANTAR MEDIEVAL COM TEATRO VIVO "VIVARTE"

organização
FRAGUESA DE ORVALHO

apoios
oleiros naturtejo planetaterra

INGRESSOS E INFORMAÇÕES:
Junta de Freguesia de Orvalho
www.jf-orvalho.pt
Contactos:
272.746.399
fraguesaorvalho@gmail.com
Inscrições limitadas até 350 pessoas até 20/05/2016

Programa
14:30 Concentração na Junta de Freguesia de Orvalho
19:00 Ceia Medieval

Preço de inscrição - 10€/pessoa (gratuito para crianças até aos 10 anos de idade)

PROGRAMA
INÍCIO ÀS 9H00 NO LARGO DO LAGAR EM ALDEIA DE JOÃO PIRES
REFORÇO ALIMENTAR
ALMOÇO (às 13:00h)
VISITA GUARDA AOS PONTOS DE INTERESSE DA ALDEIA
EXTENSÃO APROXIMADA 10 km
TIPO DE PERCURSO
DIFÍCIL, em caminho de terra batida
EQUIPAMENTO RECOMENDADO
Uma pequena mochila, roupa adequada à temperatura em caso de frio, chapéu, calçado adequado, água potável

CAMINHADA PARA CONHECER O GEOSÍTIO GEOFORMAS GRANÍTICAS DA SERRINHA

Evento inserido na Semana Europeia de Geoparques (21 de maio a 12 de junho de 2016)

29 MAIO

Aldeia de João Pires
09H00

10.00€ INSCRIÇÕES (até 24 de Maio)
SEGURO + REFORÇO ALIMENTAR + ALMOÇO
CÂMARA MUNICIPAL DE PENAMACOR (Município de Vila Verde)
Tel.: 277.394.106
E-mail: geosites@cm-penamacor.pt

2.00€ ROTAS & RAÍZES
SEGURO + REFORÇO ALIMENTAR
Tel.: 924.433.310
E-mail: rotasraizes@gmail.com

REGIONAL HELIX 2016 CONFERENCE

JUNE 29, 30 AND JULY 1
CASTELO BRANCO PORTUGAL

naturtejo GEO.PARK

Organização das Nações Unidas para a Educação, a Ciência e a Cultura
UNESCO

Organização das Nações Unidas para a Educação, a Ciência e a Cultura
UNESCO

City of World Cultural Heritage
UNESCO
Cultural Cities Network
www.2016

IGANHA-A-NOVA

PROMOTION FOR THE GENERAL PUBLIC



Semana Europeia dos Geoparques

28 maio GeoRota do Orvalho

Local: Orvalho, Oleiros
Organização: Junta de Freguesia do Orvalho, Município de Oleiros

28 e 29 maio IX Festival do Borrego

Local: Rosmaninhal, Idanha-a-Nova
Organização: Junta de Freguesia do Rosmaninhal, Município de Idanha-a-Nova

28 maio a 12 junho Actividades Outdoor e passeios de barco no Monumento Natural das Portas de Ródão

Local: Vila Velha de Ródão
Organização: Incentivos Outdoor

29 maio Caminhada para conhecer o Geossítio "Geoformas graníticas da Serrinha"

Local: Aldeia de João Pires, Penamacor
Organização: Município de Penamacor, Rotas e Raízes

Passeio Pedestre ARCVASO

Local: Vale de Souto, Oleiros
Organização: ARCVASO

1 junho Olimpíadas das Trilobites – Dia Mundial da Criança

Local: Terreiro de Santo António, Penamacor
Organização: Município de Penamacor

Dia da Criança

Local: Jardim Municipal de Oleiros
Organização: Município de Oleiros

2, 3, 4 e 5 junho Dias Templários

Local: Castelo de Castelo Branco
Organização: Associação Comercial e Industrial de Castelo Branco, Município de Castelo Branco

3 Junho Oficina de Fósseis

Local: Agrupamento de Escolas Ribeiro Sanches, Penamacor
Organização: Município de Penamacor

3, 4 e 5 junho Mercado Medieval de Oleiros

Local: Núcleo urbano antigo da Matriz, Oleiros
Organização: Município de Oleiros e Agrupamento de Escolas Padre António de Andrade

5 junho Festa da Espiga

Local: Estreito, Oleiros
Organização: Trilhos do Estreito, União das Freguesias de Estreito e Vilar Barroco

11 junho Penha Garcia "Trilhos Radicais"

Local: Rota dos Fósseis, Penha Garcia, Idanha-a-Nova
Organização: Núcleo do Sporting de Penha Garcia

11 e 12 junho Feira do Borrego de Escalvos de Baixo

Local: Escalvos de Baixo, Castelo Branco
Organização: União das Freguesias de Escalvos de Baixo e Mata, Município de Castelo Branco

12 junho Passeio Pedestre "Natureza sem Fronteiras"

Local: Malcata/Meimão, Penamacor
Organização: Município de Penamacor

II Festa das Migas

Local: Segura, Idanha-a-Nova
Organização: União das Freguesias de Zebreira e Segura, Município de Idanha-a-Nova



PROMOTION FOR THE GENERAL PUBLIC



ichnia2016.org | ichnia2016@naturtejo.com

Visit Naturtejo Geopark in:



www.geoparknaturtejo.com



www.facebook.com/geoparknaturtejo.mesetameridional



www.instagram.com/geopark_naturtejo/



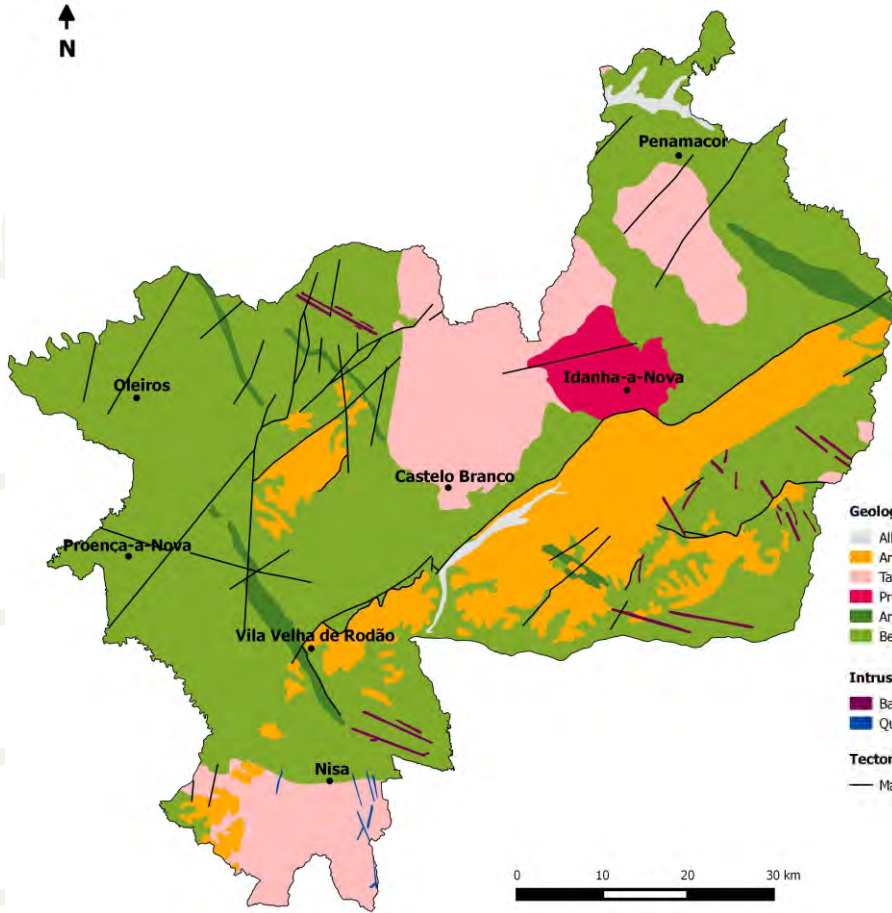
www.youtube.com/geoparknaturtejo



issuu.com/geoparknaturtejo



www.slideshare.net/geoparknaturtejomesetameridional



Geological Formations (Ma-Million years)

- Alluvium and fluvial terraces - Pliocene-Holocene (1Ma-present)
- Arkoses, breccias and conglomerates - Eocene-Pliocene (50-2.6Ma)
- Tardi-Variscan orogenic granites (315-300Ma)
- Pre-Variscan granodiorites (480-472Ma)
- Armorican Quartzite and schists - Ordovician-Lower Silurian (488-435Ma)
- Beiras Group (schists and greywackes) - Neoproterozoic (610-542Ma)

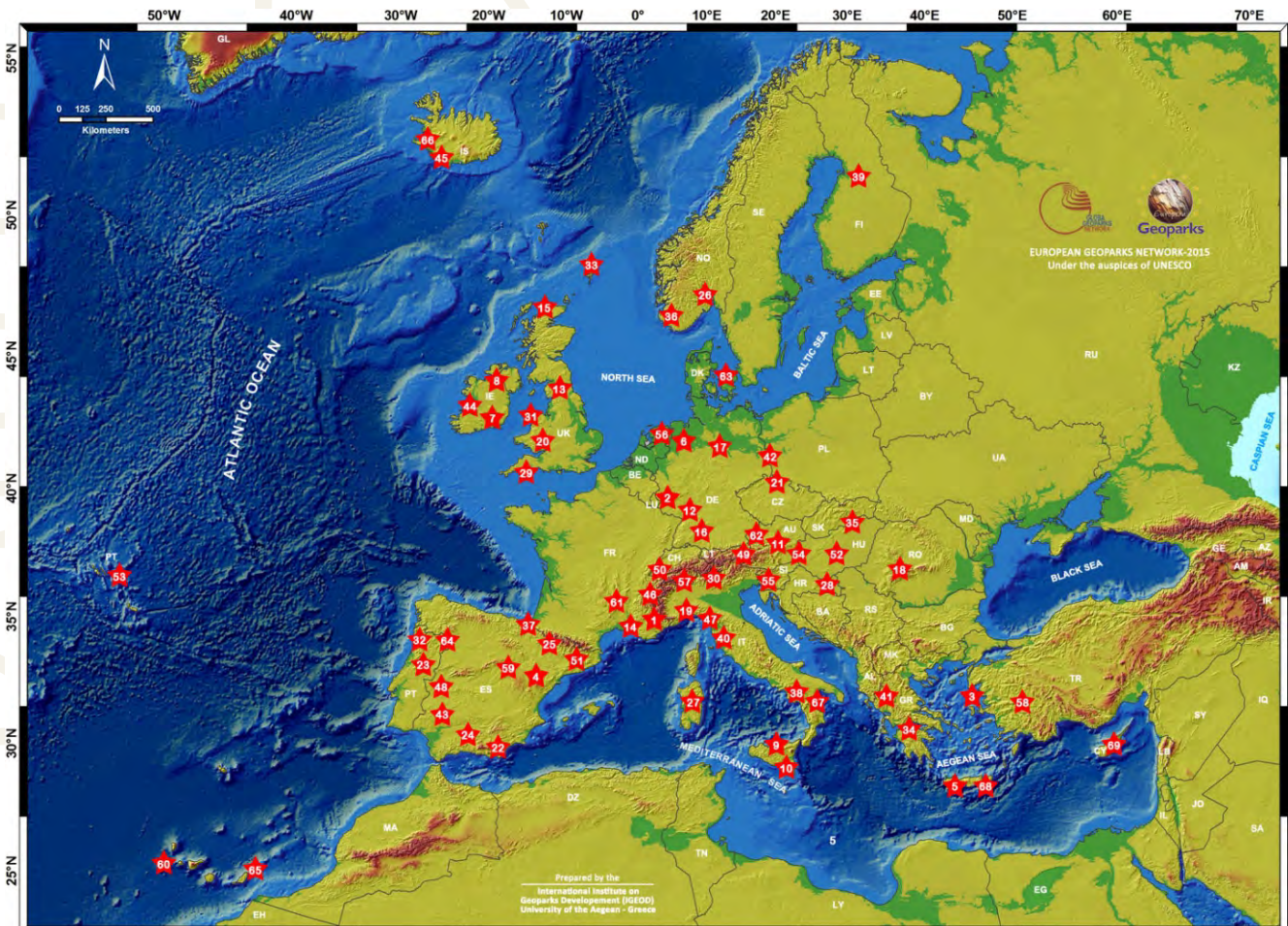
Intrusive rocks

- Basic rocks, aplites and pegmatites
- Quartz

Tectonic

- Main faults

Geoparks: Geology with human face





Edition - Geopark Naturtejo, 2016
Coordination - Carlos Neto de Carvalho
Texts - Carlos Neto de Carvalho, Joana Rodrigues,
Manuela Catana e Hugo Oliveira, Carla Jacinto
Photos - Carlos Neto de Carvalho, Joana Rodrigues,
Manuela Catana e Hugo Oliveira, Carla Jacinto
e Câmara Municipal de Idanha-a-Nova
Clipping - Alice Marcelo e Carla Jacinto
Design - Layer [Design and Print Studio]
Translation - Sérgio Ribeiro
Editing - Joana Rodrigues



CRUZIANA

GEOPARK NATURTEJO DA MESETA MERIDIONAL EUROPEAN AND GLOBAL GEOPARK MONTHLY REPORT

www.geoparknaturtejo.com